



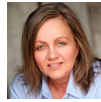
Women Construction Owners & Executives, USA

2018–2019 WCOE Board of Directors

EXECUTIVE BOARD



Theresa Kern
President
President, MA Rebar Services, Inc.
1415 W 37th Street, Suite 205
West Chicago, IL 60609
T: 773-475-7842
tk@marebarservices.com



Sheila Ohrenberg
President Elect
President, The Sorella Group
14844 West 107th Street
Lenexa, KS 66215
T: 913-390-9544
sheila@sorellagroup.com



Caryn Boisen
Immediate Past President
Attorney, Larson King LLP
30 East Seventh Street #2800
St. Paul, MN 55101
T: 651-312-6529
cboisen@larsonking.com



Lorraine D'Angelo
Secretary
President, LDA Compliance Consulting
5700 Arlington Ave. #3U
Bronx, NY 10471
T: 914-548-6369
Lorraine@ldacomplianceconsulting.com



Ruth Bley
Treasurer
CEO, Bleyco Incorporated
11425 Cull Canyon Rd.
Castro Valley, CA 94552
T: 510-538-5228
rbley@bleyco.com

BOARD OF DIRECTORS



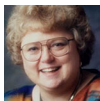
Danette M. Beck
CPCU, ARM, CRIS
National Associate Director at Large
National Construction Practice Leader
USI Insurance Services
100 Summit Lake Drive
Valhalla, NY 10595
T: 914-747-6324
danette.beck@usi.com



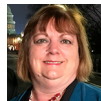
Lee Cunningham
Legislative Affairs
President, BT Metal Sales
825 W 14th St.
Eureka, CA 95501
T: 707-443-0934
lee@btmetals.com



Margery Newman
Policy
Attorney, Bryce, Downey & Lenkov
200 N LaSalle Street, Suite 2700
Chicago, IL 60601
T: 312-327-0041
mnewman@bdlfirm.com



Ida Brooker
Resource Center
President,
Construction Consulting Northwest
19412 146th Ave. SE
Renton, WA 98058
T: 425-965-2434
ccnwgroup@aol.com



Deborah Wilder
Mobius Circle Chair
President, Contractor Compliance and
Monitoring, Inc.
635 Mariners Island Blvd. #200
San Mateo, CA 94404
T: 650-522-4403
dwilder@ccmilcp.com



Cara Rhoades
Corporate Alliance Partner Chair
Relationship Manager, Sorella Group
14844 West 107th Street
Lenexa, KS 66215
T: 913-390-9544
cara@sorellagroup.com

REGIONAL DIRECTORS



Carole Green
Regional Director: Western
President/CEO, CE Green, Inc.
6105 Main Avenue, Suite 4
Orangevale, CA 95662
T: 916-365-4925
carole@cegreeninc.com



Y. Lisa Colon Heron
Partner, Smith, Currie & Hancock, LLP
101 NE 3rd Ave. #1910
Ft. Lauderdale, FL 33301
T: 954-761-8700
lcheron@smithcurrie.com



Deborah Bradley
Regional Director: Northeast
President, Deborah Bradley Construction
& Management Services, Inc.
481 Manhattan Ave.
New York, NY 10027-5237
T: 212-222-2494
deborah@dbcnewyork.com



Colleen Kramer
Regional Director: East Central
President, Evergreen Supply Co.
312 North May Street
Chicago, IL 60007
T: 773-375-4750
ckramer@evergreensupply.com